

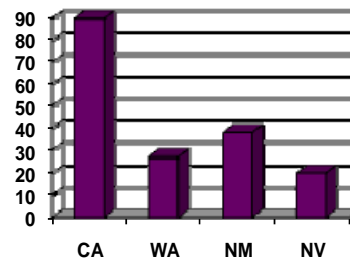
Ideas that I'm going to study and learn.

There are three main types of graphs.

- 1) A bar chart or histogram – which usually shows the quantity of individual items.
- 2) A pie chart or circle chart – which shows the percent of different items.
- 3) A line graph – which usually shows how things change over time.

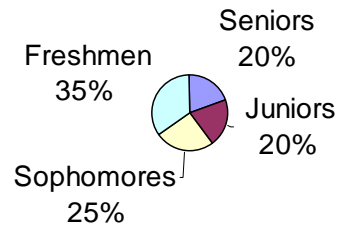
Approximately how many Indian reservations are in Nevada?

- A) 10
- B) 20
- C) 30
- D) 95



If the school has 2000 students, how many are in the Senior class?

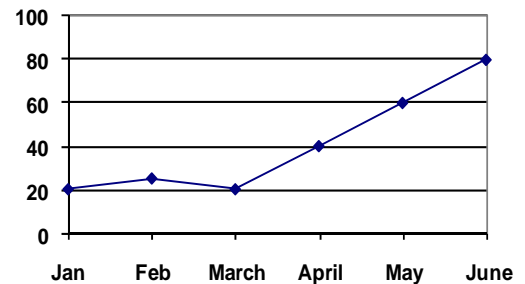
- a. 600
- b. 500
- c. 400
- d. 300



During what period did prices rise most rapidly?

- A) January - February
- B) February - April
- C) January - April
- D) March - June

Share Price Flucuation



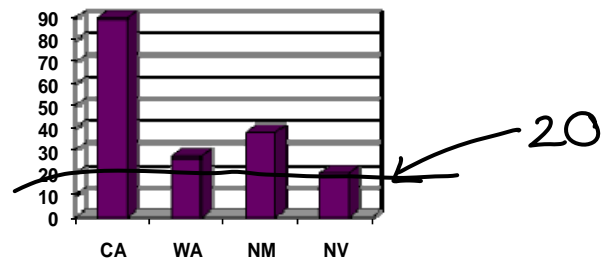
Ideas that I'm going to study and learn.

There are three main types of graphs.

- 1) A bar chart or histogram – which usually shows the quantity of individual items.
- 2) A pie chart or circle chart – which shows the percent of different items.
- 3) A line graph – which usually shows how things change over time.

Approximately how many Indian reservations are in Nevada?

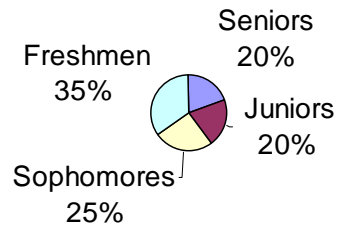
- A) 10
- B) 20
- C) 30
- D) 95



If the school has 2000 students, how many are in the Senior class?

- a. 600
- b. 500
- c. 400
- d. 300

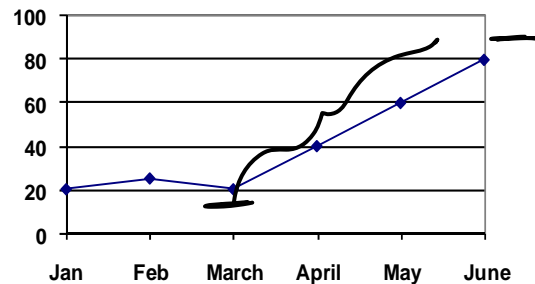
$$\begin{array}{r} \times 2000 \\ \quad .20 \\ \hline 400.00 \end{array}$$



During what period did prices rise most rapidly?

- A) January - February $25 - 20 = 5$
- B) February - April
- C) January - April
- D) March - June $80 - 20 = 60$

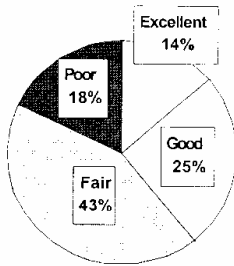
Share Price Flucuation



Let me show what I know!

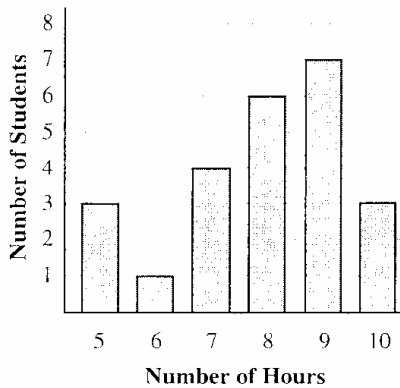
Try these problems taken from old proficiency exams.

39. A news magazine asked 1000 people to judge the President's performance in office as poor, fair, good, or excellent. The results are displayed in the graph below. How many people in the pool rated the President's performance as good or excellent?



- A. 100
- B. 140
- C. 250
- D. 390

Amount of Hours Spent Exercising

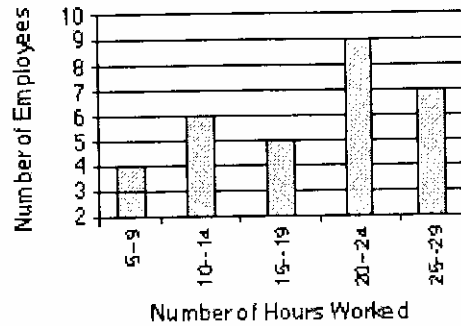


The graph above shows the results of a survey in which students were asked how many hours they exercised each week. How many students were surveyed?

- A 45
- B 36
- C 30
- D 24

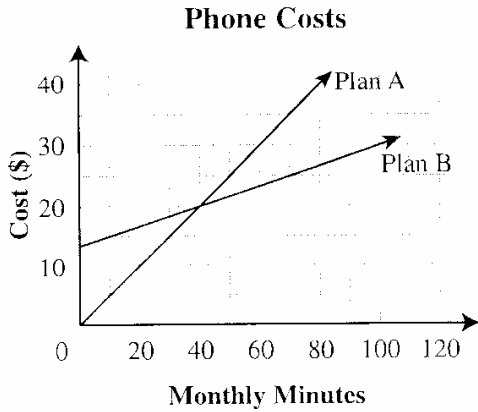
The graph below shows the number of hours worked each week by part-time employees at Clothing Emporium. Use the graph information to answer questions 24 and 25.

Clothing Emporium



24. What is the most common number of hours worked?
- A. 25-29
 - B. 20-24
 - C. 15-19
 - D. 10-14
25. What is the total number of part-time employees working at Clothing Emporium?
- A. 25
 - B. 27
 - C. 29
 - D. 31

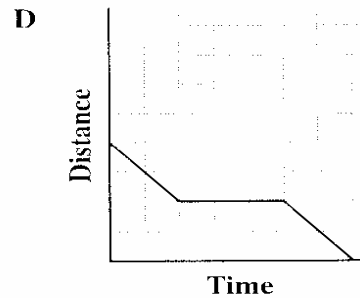
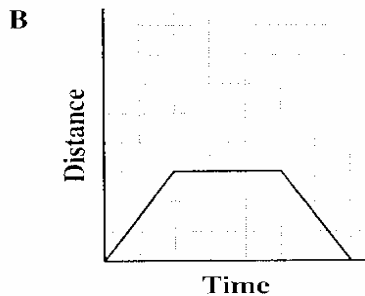
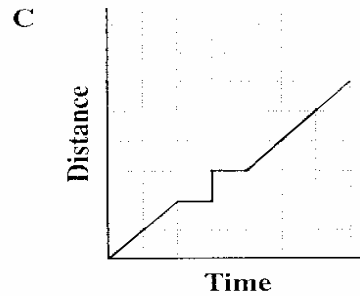
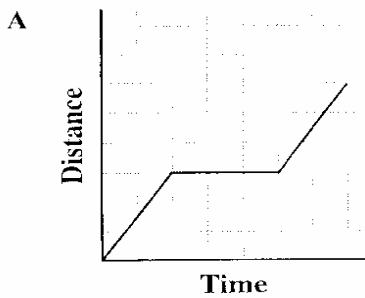
33 Use the graph below to answer the question.



The graph above shows the costs of two phone plans. How many minutes does a person need to call each month so that Plan B is the less expensive plan to use?

- A less than 10 minutes
- B more than 10 minutes but less than 20 minutes
- C more than 30 minutes but less than 40 minutes
- D more than 40 minutes

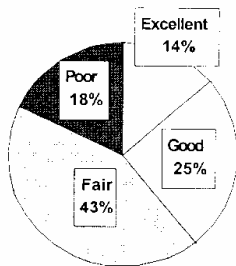
One afternoon Sam left home and walked to the library using a specific route. While at the library, he read a magazine. He then walked home at the same pace using the same route. Which graph best represents Sam's **distance from home** at any given time during that afternoon?



Let me show what I know!

Try these problems taken from old proficiency exams.

39. A news magazine asked 1000 people to judge the President's performance in office as poor, fair, good, or excellent. The results are displayed in the graph below. How many people in the pool rated the President's performance as good or excellent?



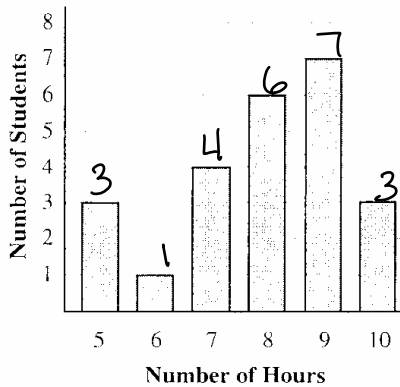
good 25%
excl 14%

39%
1000
x .39

39000

- A. 100
- B. 140
- C. 250
- D. 390**

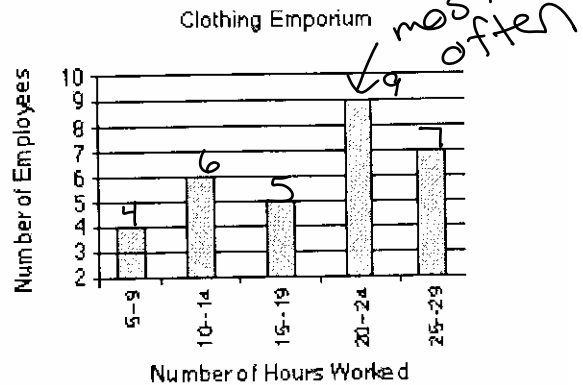
Amount of Hours Spent Exercising



The graph above shows the results of a survey in which students were asked how many hours they exercised each week. How many students were surveyed?

- A 45
- B 36
- C 30
- D 24**

The graph below shows the number of hours worked each week by part-time employees at Clothing Emporium. Use the graph information to answer questions 24 and 25.



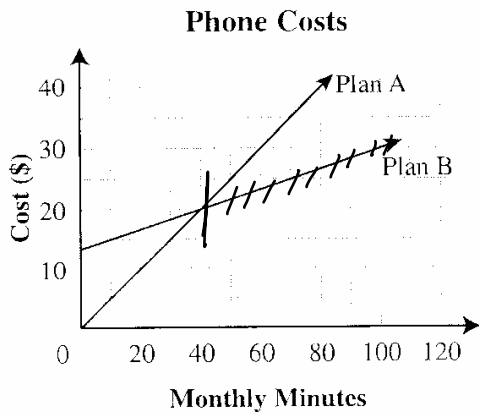
24. What is the most common number of hours worked?
- A. 25-29
 - B. 20-24**
 - C. 15-19
 - D. 10-14

25. What is the total number of part-time employees working at Clothing Emporium?

- A. 25
- B. 27
- C. 29
- D. 31**

add # of people in each column

33 Use the graph below to answer the question.



The graph above shows the costs of two phone plans. How many minutes does a person need to call each month so that Plan B is the less expensive plan to use?

- A less than 10 minutes
- B more than 10 minutes but less than 20 minutes
- C more than 30 minutes but less than 40 minutes
- D more than 40 minutes**

One afternoon Sam left home and walked to the library using a specific route. While at the library, he read a magazine. He then walked home at the same pace using the same route. Which graph best represents Sam's **distance from home** at any given time during that afternoon?

